

## Shifter setting:

**DO NOT KEEP ANYTHING FROM THE ORIGINAL LEVER**

--Fixed the shifter in right for easy reverse gear.

--To the left for a reverse gear less easy to pass.

-- If the shift gear is not good, check your linkage gearbox (following the instructions)

## MOUNTING OF SHIFTER

First, many people drive their cars every day. We must not forget that on old VW is the **1st gear is top/front and 2nd gear bottom/back** (not on the left).



For mounting: the shifter is standard to be **fixed in the center** (left / right) (Tested on many VW vehicles "unmodified").



If your VW was modified at the gearbox or shift linkage for some reason, the setting is very simple to adjust.

Mounting shifter:

To the right for easy reverse gear.

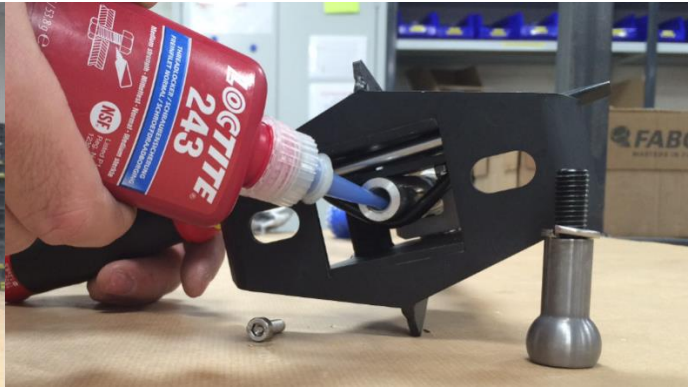
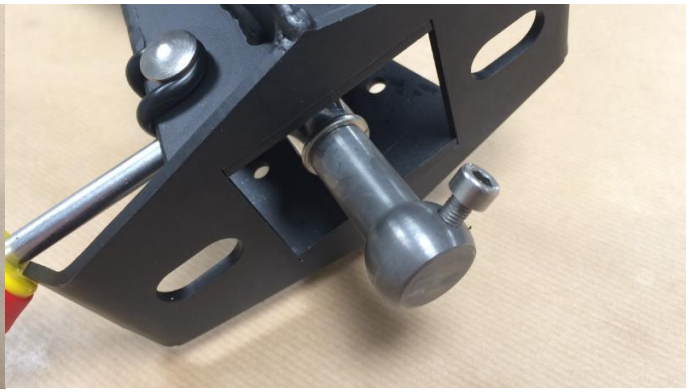
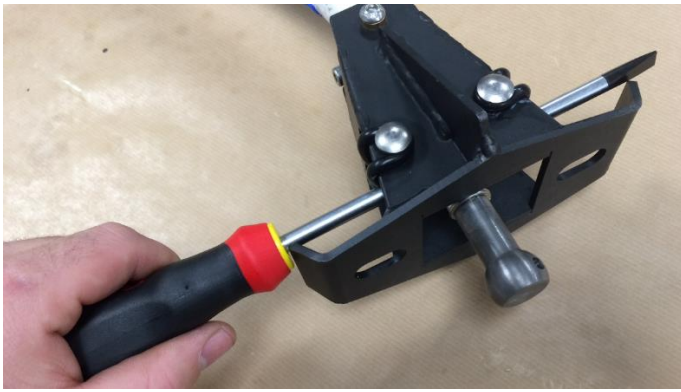
To the left for a reverse gear less easy to pass.



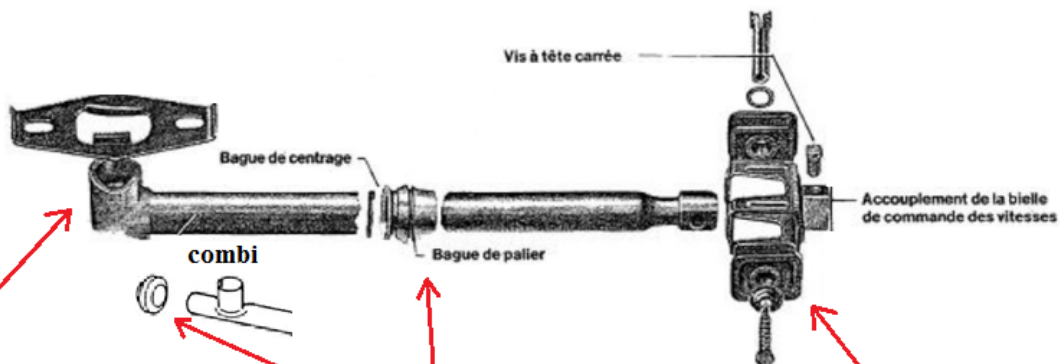
You can also adjust the height of the ball connected to the shift linkage!

**TIGHTEN WITH SPINDLE BRAKE  
LOCTITE GLUE "NORMAL"  
IS !! IMPORTANT !!**





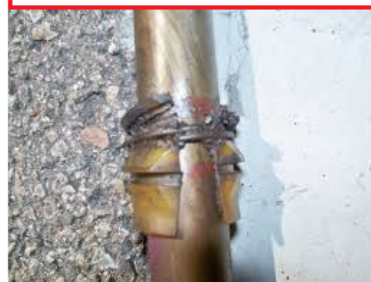
Which may prevent the precision of shifter



Jeu dans la tête de bielle de commande du à l'écartement de la rainure, à cause de la goupille de votre ancien levier.  
-reserrer  
-reserrer et souder  
-ou changer

Pas souvent mis en cause, mais l'usure peut provoquer un jeu d'avant en arrière.  
-changer

Jeu du guide de tringlerie du à une usure, dans certain cas le guide est inexistant.  
-changer





# TRAFFICCOX

## Beetle and various

Shifting fast and short!!!

**Lever shifter complete: 160€**

Rod curved: +10€

Polish rod: +10€

Black shifter boot: 12€

Color shifter boot: 18€

Knob alu : 25€



**38cm (15 inch) Height**

→ **Steel Frame in 3mm (0.12 inch) Arc cutting and Weld.**

→ **Full Rod 16mm (0.63 inch) and Knob (Screw-thread M10x150) in Alu AU4G.**

→ **Squarish moving in Alu AU4G.**

→ **Bronze Pivot-bush** for moving shifter.

→ **O'ring seal 40x5mm (1.57x0.2 inch) EPDM anti-corrosion (not cracking)** for anti-vibration of rod, and **springs** for the resistance for reverse gear.

→ **Ball under shifter In Hrd steel** and adjustable.

→ **Stainless steel bolt** assemble a Loctite Glue and locknut.

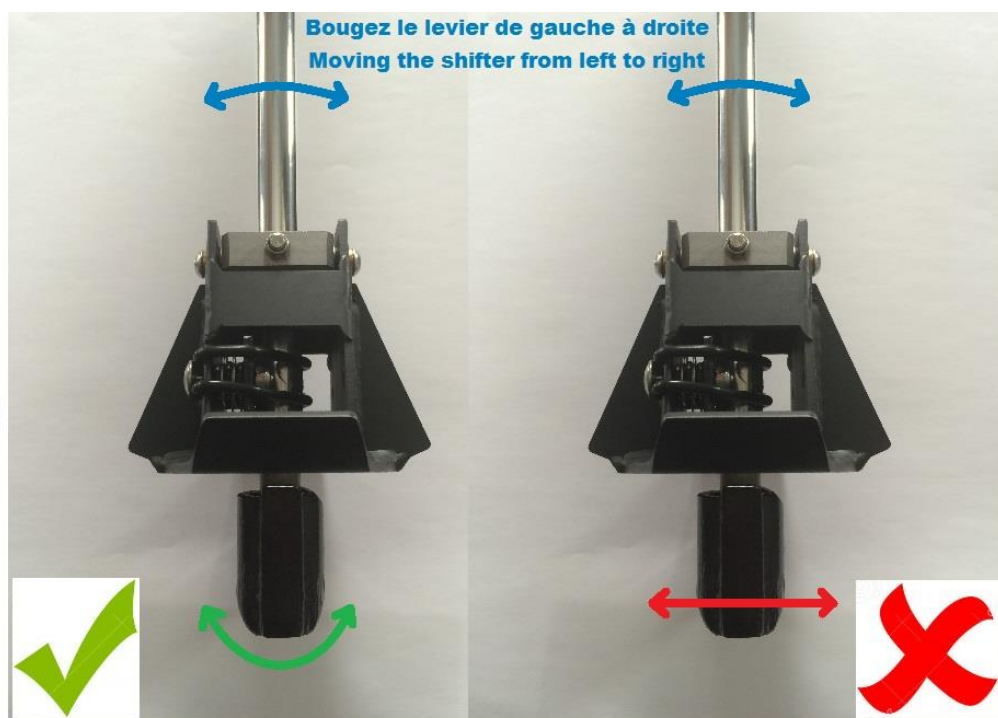
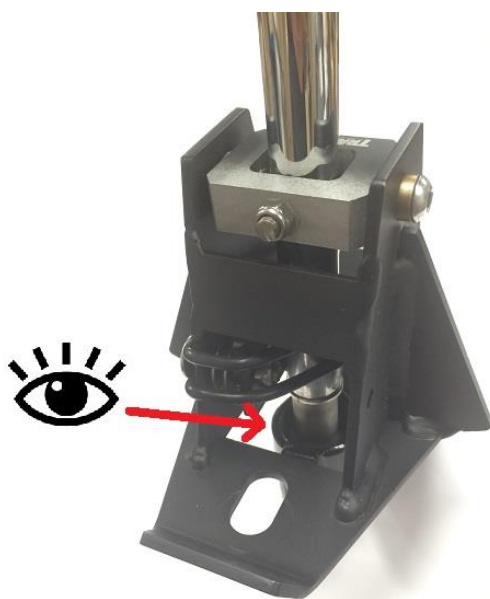
→ **Fastening in car adjustable** with Screw TH 10.9 and ring thick.



Contact me for facebook or [trafficox@gmail.com](mailto:trafficox@gmail.com)



# Check the bar guide



**Changez le guide de tringlerie!**  
**Change the bar guide!**

COX ENG